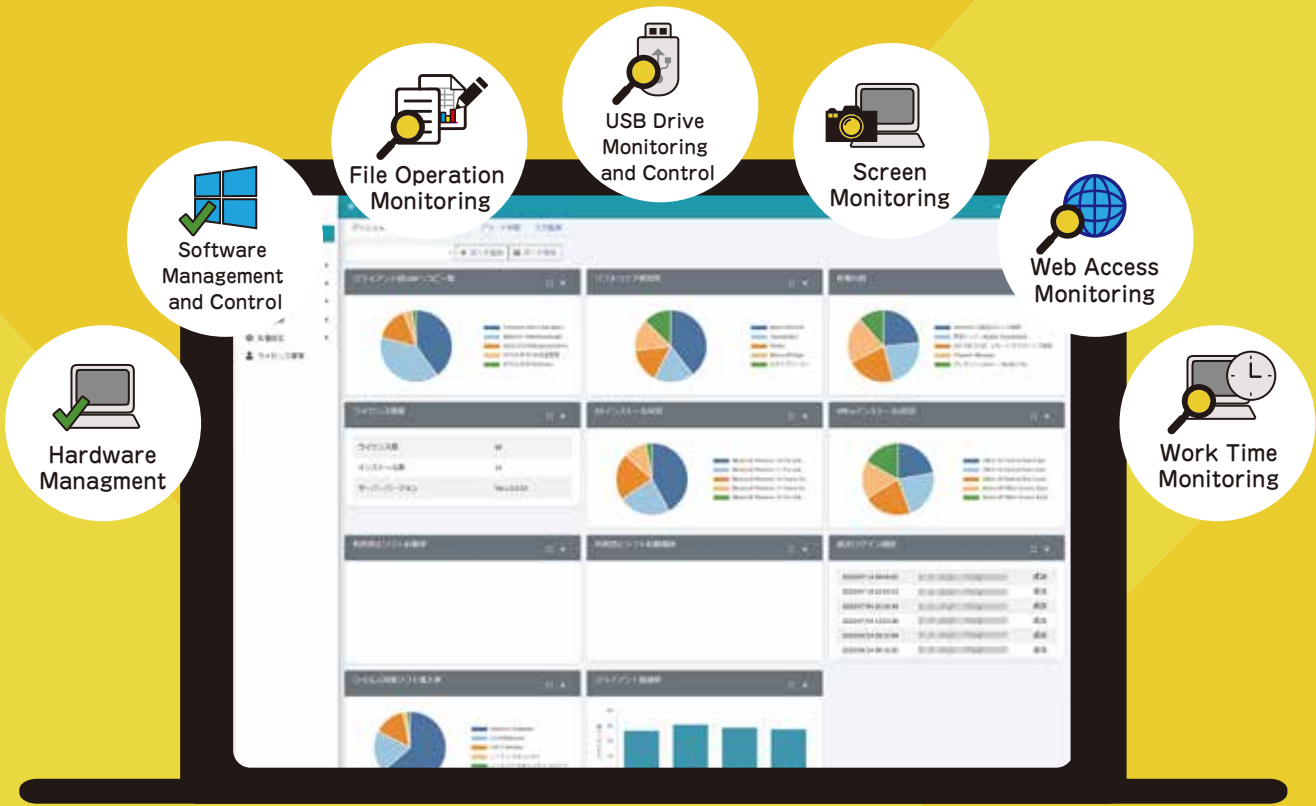




Watch

Logging and IT Asset Management



When thinking about

PC and Information Management

Do You Have These **Concerns?**



As the number of PCs increases **manual management** is becoming more and more difficult.



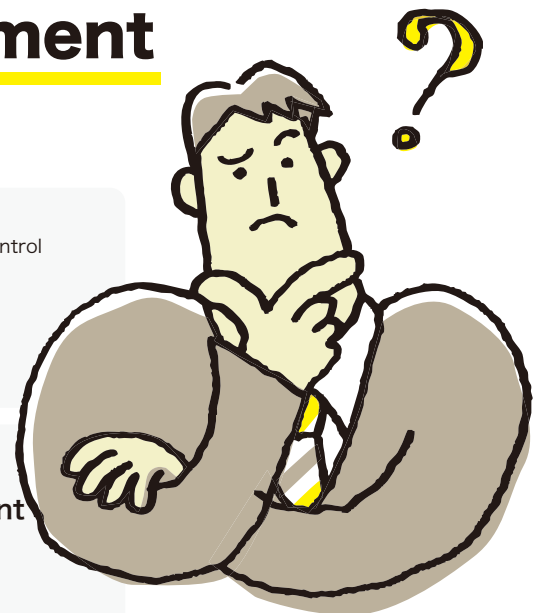
How to manage and control information of **teleworking employees**.



The employee time tracking system **does not provide an accurate picture** of work being done.



IT asset and log management are not being done properly.



Watch can solve these issues ! >>>>

Watch's Key Points

POINT
01

Set the necessary collected information by bulk operation.

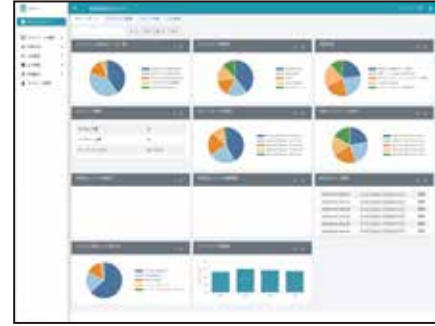
Multiple policies (information collection settings) can be registered, allowing you to set policies according to job positions and organizations.



POINT
02

Simple and easy-to-use management interface.

Viewing settings and logs is a breeze!



Functionality tailored to your company needs.

Enhance Data Loss Prevention with advanced monitoring and control functions.

This product features tools designed to support Data Loss Prevention (DLP), safeguarding sensitive information and helping to prevent unauthorized access or transfer.



Hardware Asset Management

Obtain and centrally manage PC hardware information (e.g., OS, version, serial number) from the management interface.



Software Asset Management and Control

Obtain and centrally manage installed software information (e.g., security software, presence of automatic updates) on the management interface, and prohibit high-risk apps.



File Operation Monitoring

Obtain logs of file creation, deletion, etc. You can also record specific file access. Monitor file viewing, copying, and moving to prevent unauthorized data leakage, supporting core DLP functions.



USB Drive Monitoring and Control

Usage logs of USB drives and WPDs can be obtained, or their usage can be restricted. Logs include manufacturer names and serial numbers, helping to prevent unauthorized data transfers and support DLP.



Screen Monitoring

Obtain PC screenshots at regular intervals. Logging data as images allows intuitive understanding of computer usage and work status.



Web Access Monitoring

Obtain browsing logs from web browsers.



Usage Time Monitoring

Obtain summaries of usage time on PCs. Logs are obtained for each software used (e.g., web browser, pages viewed, viewing times).



Report Sending

Send collected logs as daily, weekly, or monthly reports to administrators via email.



株式会社 アレクソン

Business Partner East Japan Sales Office
〒103-0013 Tokyo, Chuo-ku, Ningyocho 2-25-13
Rinrei Nihonbashi Building 5F
TEL 03-3667-2276 FAX 03-3667-5329

Business Partner West Japan Sales Office
〒541-0052 Osaka, Chuo-ku, Azuchimachi 1-8-6 Daiei Building 4F
TEL 06-6121-6048 FAX 06-6121-6049

Business Partner West Japan Sales Fukuoka Office
〒819-0025 Fukuoka, Nishi-ku, Ishimaru 2-40-8
TEL 092-892-9677 FAX 092-892-9678

Website: <https://www.alexon.co.jp/>

For inquiries, please contact: